



PROPELLER

FROM THE COMMODORE'S DESK

Greetings all for this month of the Propeller.

Our Wednesday members draw was won last week by Jan Woodward, a new member. Congratulations Jan!

The Club has kicked off the next prize pool, the same way as the first, by donating \$200.00. Brighton Manor is again also donating \$ 50.00 each week. A big thanks to Brighton Manor for their support each week, the \$15.00 meal deals have been good and that includes a free drink with your meal. Brighton Manor has introduced a delicious new menu, so come down and check that out.

The RVMYC theme night on 17th of July was a great success and all the members that I spoke to enjoyed themselves. The band Ripcord played

excellent music and the dance floor was well used from the first song. We had some very 'special guests' attend including The Village People, Cat Woman, and Cleopatra, just to name a few. I encourage you all to come down to the next club function and enjoy the club with your fellow members.

Our last social cruising event was on Sunday 18th July, up the Maribyrnong River to the Riverview Tea Gardens at Avondale Heights, where 22 members and guests enjoyed a pleasant cruise and BBQ lunch. Although the weather was a bit cold, all who attended enjoyed each other's company.

A big thanks to Andrew & Sunny Broadway for starting off our Club Library, you'll see their efforts when you next come into the dining room. If you have any books in good condition

to donate, please contact them. Thanks also to Kevin Ezard for his donations.

We also received some memorabilia dating back to 1958 from past member Stan Sykes, which include photos, newspaper cuttings, pennants and tankards and these are on loan from his nephew Peter Berry.

The footy tipping is nearing the end and Ron Mulholland has still got a huge lead.

Until next month I hope to see you down at the club enjoying our club's dining facilities or out on the water using your boats.

Enjoyable boating!

Darren Keast,

Commodore



RVMYC MEMBERS DRAW – JULY

JULY 21 -WINNER - JAN WOODWARD \$650

JULY 7: 'MNIA' - GARY RIGBY;
 JULY 14: 'MNIA' - ADRIAN AMES
 JULY 28: 'MNIA' - DARRYL JAMES

**NEW PRIZE CONTINUES TO JACKPOT,
 NOW \$300**

**YOU MUST BE IN ATTENDANCE
 AND A FINANCIAL MEMBER TO WIN.**

**MEMBERS CONTRIBUTIONS ARE MOST WELCOME.
 ARTICLES WILL BE PLACED AS SOON AS POSSIBLE DEPENDING ON AVAILABLE SPACE.**

' PORT WELSHPOOL & REFUGE COVE '

By Mike & Venora Smith

We departed RVMYC in the early hours on Saturday morning (May 15th) after an overnight stop at the Club in Williamstown where we enjoyed good hospitality and a few 'sherberts'.

"Braveheart" and "Impulse" headed towards Port Welshpool arriving around 9.30am. After launching our boats we met up with "Sapphire" and our Cruise Leader "Serenity". We had a Skippers Meeting and Jay said we would head out and depending on the water conditions, we will try and make our way towards Refuge Cove or Corner Inlet. We had not even got past the main jetty when we came across dolphins in the water playing. We stopped our boats and observed them for about 20 minutes. We headed out further, stopped again as we came across seals sunbaking on the water.

Once outside the main entrance we planed for a while until Jay decided it was unsuitable (flying off the waves didn't suit the ladies) so we turned back and headed towards the other side of Wilsons Prom and tucked inside this beautiful inlet. We all fished the afternoon away, caught lots of flathead which Jay filleted for "Happy Hour". We then headed back to Port Welshpool and stayed overnight inside the floating jetty. "Happy Hour" consisted of the flathead fillets which were enough for all and drinks. We all put on our Cobs and had a roast dinner and enjoyed the evening.



VENORA SMITH

Sunday morning I awoke to mirror conditions on the bay and started knocking on all the boats to get everyone up so we could head towards Refuge Cove. We all headed off with the Bay "Mirror Like" conditions. Planing at 25 knots towards the entrance and onward to Refuge Cove. We went on the inside of the waves breaking on the sand bars on our port side, which was great to see. We then headed past Rabbit Island which seemed to take forever. There were a few big swells and "Serenity" became airborne a couple of times. *We could have slowed down, but what the hell!*



MIKE SMITH

We arrived at Refuge Cove around 1 hour later and drove into a magnificent inlet which had sandy beaches on both sides and was surrounded by cliffs. To our surprise there was nobody else there. We anchored our boats and enjoyed breakfast after a great trip.

Jay picked everyone up with his taxi and took us all to shore. As Monica was getting out of the dinghy a small wave hit and over she went (in the past this has always been a sign of a great boating trip). We then walked up the beach and had a look at the plaques from other boats that had been here before us. We all successfully got back on board, had one last look and headed back out.

On the way back, the seas were so calm that we headed towards Rabbit Island and pulled up just short of the beach where we had a look around at the local birdlife. We continued back in to Port Welshpool stopping for lunch at Freshwater Inlet before heading back to the ramp. All boats were back on their trailers around 3pm. There were very good wash down facilities at the boat ramp. It was here where we all said our last goodbyes and all headed home. A great weekend was had by all.

At last we can say we have been to Refuge Cove and on the Bass Strait as well. I would highly recommend it with these perfect weather conditions.

**Mike & Venora
"Braveheart"**

**MEMBERS DRAW
WINNER! JULY 21**
**Congratulations to
JAN WOODWARD
who won the \$650**

**Jan is a regular Wednesday
attendee and supporter,
WELL DONE!**



' MYALL ODYSSEY '

By Len Dockrill

Another adventure that must go onto every boaties' "must do" list, is a trip up the Myall River and through the beautiful Myall Lakes on the north coast of NSW. The scenery is stunning. The area is pretty much pristine with only occasional evidence of human settlement, and you can go all day without seeing another soul.

You start the adventure at Port Stephens which is about 25 minutes from Newcastle airport. You can easily spend a couple of weeks exploring Port Stephens itself, which is three times the size of Sydney Harbour and full of interesting coves and bays.

From Port Stephens you navigate up the Myall River to Tea Gardens. The channel is well marked but quite narrow at the "dog leg" and the current is fast on the run-out tide. It takes about an hour to get to Tea Gardens from the south side of Port Stephens. Tea Gardens is a quiet little village with a great pub, so it is a good place to stop if you are waiting for the tide.

"there were two kinds of boaties on
the Myall - some who admit to
running aground and some
who are liars!"

And the tide is important, as the river from Tea Gardens to the lakes is shallow and winding so navigation should only be attempted on the rising tide. You will run aground so a boat with a keel and protected propeller is essential (no danglies!). As the water is brown from tannins it is hard see the bottom and you need to travel slowly and steer from the depth sounder. However in many places there is only a little over a metre of depth and the sounder will have a 'spack attack', so care is required.



I only made it about 2nm from Tea Gardens before my first grounding. The location, appropriately, is called Monkey Jacket and as I sat there, anchor down,

drinking a beer and eating a gourmet sandwich, a few locals came up in a big tiny to see if I was OK. They advised that there were two kinds of boaties on the Myall - some who admit to running aground and some who are liars! They also told me the key to navigation was to not travel in a straight line between the marks but instead to travel in a slow lazy S route, which is the way that the channel works.

After a couple more beers the tide had come up enough to get going again and I tried the S approach with great success.



It takes about 3 hours to travel the 12nm from Tea Gardens to the first lake. Most of the river is restricted to 8 knots with some sections 4 knots. As well as shallow water you also need to watch out for overhanging trees. This is hard to do because what you really want to watch is all the ducks, pelicans and other birds, plus the beautiful scenery. Travelling up the river you pass places with interesting names like Billy Barlows, Devils Elbow, Brasswater and Chinamans Nob before finally entering into the lake system at Tamboy.

The lakes are vast and extend for about 12 nm. They are quite shallow and generally about 3 - 4m deep, although there are extensive shallower areas and few channel markers (particularly in the upper lakes). Vegetation, including some large trees, comes right down to the water's edge and there are no beaches. There are water birds everywhere and depending on the time of year, you can also see lots of baby ducks and swans out on the water. Crossing the first lake (Bombah Broadwater) you get to Myall Shores where a car ferry operates. Care is again required here in passing over the cables which is only allowed when the ferry is stopped at either shore - this is pretty much all of the time because there is virtually no traffic.

As you travel further up the lake system you become increasingly aware of the sea grass. Whilst the charts will indicate a depth of 3m or more, the grass grows up quite close to the surface and is very dense, so again

Continued overleaf -

' MYALL ODYSSEY ' continued

your sounder will have a 'spack attack'. It is difficult to find a way through at some locations, particularly in the third lake (Boolambayte Lake). I found that the best guide was the swans. Where there are lots of swans usually means lots of weed, so if you stay away from the swans you should be OK, but be careful as this does not always work.



At the northern end of the system is the largest lake (Myall Lake) which extends as far up as Bungwhal - aren't the names great! There are a number of islands in this lake, all with vegetation and trees tumbling down to the water - and water birds everywhere.

Overnight courtesy moorings are provided in a number of protected bays where spectacular sunsets can be enjoyed in the evening followed by a chorus of bird calls as your morning alarm. There are other bays where overnight anchoring is possible and there is a suitable bay for every wind direction.

If time permits a visit into Nerong Creek is also worth it, with great scenery and lovely protected bays for anchoring. A trip along the Upper Myall River should also be included on your itinerary. The river is accessed from the western end of Bombah Broadwater. It is generally about 5m deep but is narrow and snaggy in places with a lot of overhangs. You can navigate up about 8nm, with the first half through bushland and the



second half open farmland right down to the water's edge. You can travel only as far as the town of Bullahdelah, where a low bridge blocks all but small boats. There is wharf below the bridge from which you can walk the short distance to the town.

Returning down river to Tea Gardens requires the same care as the up river cruise, however tide timing is more critical. There is about a 4 hour tide time difference between Tamboy and Tea Gardens so trip planning is required to ensure that you get the high tide in the shallower lower sections of the river.



So put Myall Lakes on your list. Allow at least 4 days, but you could take more than a week. Make sure you take your camera. And don't forget to add another week for Port Stephens as well!

ACCOUNT PAYMENTS via EFT TRANSFERS

Members are advised that the club will be changing bank account numbers in the near future. If you use the convenience of electronic funds transfer, please take a moment to check the bank account number quoted on your statement **BEFORE** transmitting funds.

You will need to update the RVMYC account number for transfers on your internet banking records.

If you have any queries email rvmc@optusnet.com.au or call 9397 5036.

~ PLEASE QUOTE YOUR SURNAME ON ANY PAYMENTS ~

MEMBERSHIP

**NO JOINING FEE OFFER
ENDS AUGUST 20**

Take advantage of this opportunity before it ends.

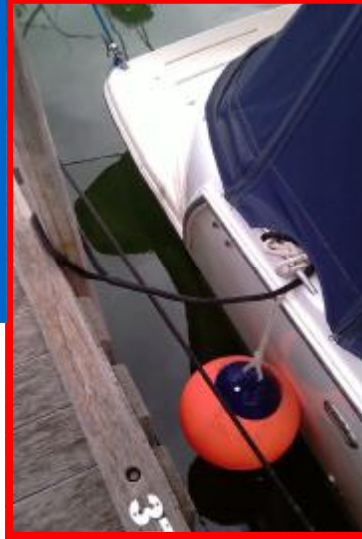
So let your family and friends know about the zero joining fee before the offer closes.

CLUB NEWS

ROPES



Members are reminded
'NOT TO SHORT TIE'
their boats
except with stretch materials that will
not strain our bollards and wharf structure.



DOG WASTE

Reminder to members of By-law #8
under Club House, Premises, Yard
and Jetties.

"Dogs are never permitted inside the Clubhouse.
Dogs must not be exercised on the lawns.
Any droppings must be cleaned up
by the owner of the dog."

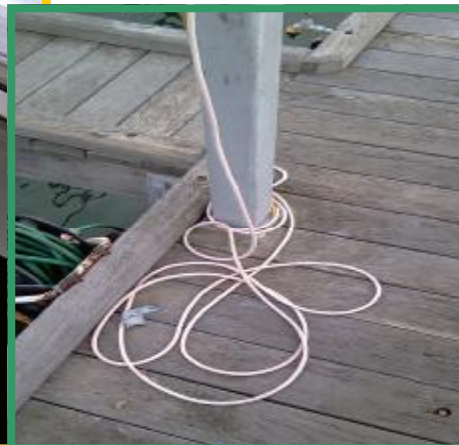
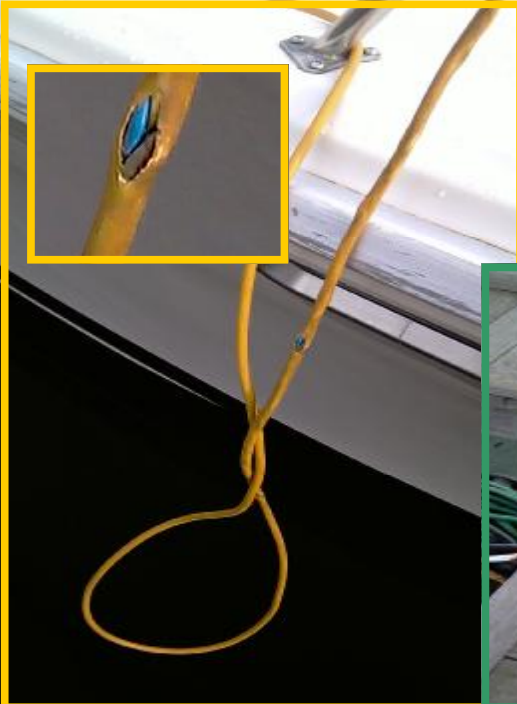
**~ PLEASE RESPECT OTHER MEMBERS
BY CLEANING UP IMMEDIATELY AFTER
YOUR DOG ~**



POWER-LEADS

Members are reminded of By-law #20
under Club House,
Premises, Yard and
Jetties.

"Jetties are to be kept clear of all refuse, litter and unused material or
equipment." i.e. Power leads.



NON - MEMBERS / VISITORS

Members are reminded of By-laws #1 & #5 under Club House, Premises, Yard and Jetties.

Also the following rules in the Statement of Purpose and Constitution;

Rule 2 (1) "Club Premises" and 19(1) regarding the admittance and conduct of non-members.

- ◆ Persons who are not members are not entitled to admission to the Club premises, unless accompanied by and signed in by a member.
- ◆ Members introducing visitors shall remain in their company during their visit.
- ◆ "Club Premises" means any land, buildings, water, jetties, marinas, or slipways from time to time used or occupied by the club.
- ◆ A member may introduce a visitor to the Club for the day of the visit only and the name and address of such visitor shall be entered in a book kept for that purpose and the member shall sign that book against the name of his guest.

The member shall be responsible for the conduct of his guest during his visit.

SUB - COMMITTEE MEMBERS



SUB COMMITTEES 2010-2011

SUB COMMITTEES:

FINANCE & ADMINISTRATION:	Cameron Simpson (Chair)
WORKS:	Mark Rindfleish (Chair)
MARINA:	Chris Ackerman (Chair)
CATERING/HOUSE:	Darren Keast (Chair)
BOATING:	Simon Mills (Chair)
BUILDING:	Darren Keast (Chair)
PROPELLER:	Dawn Holmes (Chair)
MEMBERSHIP:	Dawn Holmes/Tony Hill (Chair)
MARINERS:	Tracey Keast (Chair)

The Officers and Immediate past Commodore are ex officio members of all Sub-Committees.

Members are encouraged to take an interest in their club and raise issues through the correct channels. Please feel free to email the office or write to us and we will deliver the item to the appropriate Chairperson.

ELECTRICAL POWER LEADS

It is an occupational Health and Safety requirement for RVMYC to ensure that all power leads in use on the marinas comply with relevant safety codes and are checked regularly and tagged for compliance.

All power leads from the marina power poles to berthed vessels must be:-

1. Of the correct rating
2. Maintained in good and serviceable condition
3. Connected to the power pole with a weatherproof (screw type) fitting
4. Laid from the power pole to the vessel in a safe manner and not overly coiled or causing an obstruction on the marina, or on the vessel
5. Be checked annually and tagged for compliance by a certified electrical contractor

We ask that you please check your power leads and ensure that they comply with all of the above points (1 to 5) before the end of August. Once you have completed the 'test and tag' compliance review, you will need to advise the office in writing or by email that this review has been completed.

Should you require any assistance with the above please contact the office as soon as possible.

As early as practicable after the 1st of September, the club will be arranging for a certified electrical contractor to check all power leads on the marina and for any members boats that have not already complied with this request and advised the office, the club's contractor will review them for compliance .

For the boats that have not had their own review, the Club's contractor will check those leads and any found to be non compliant with the relevant safety standard will be repaired/replaced by the club's contractor, at the expense of the individual member, and the relevant cost will be charged to the members account.

The Committee will review this occupational Health and Safety requirement matter each year.

We thank you for your understanding and look forward to your co-operation.

SOCIAL CALENDAR

August
8

**RVMYC
QUIZ
RALLY**



COME BOATING IN WINTER AND ENJOY A FUN MORNING CRUISING IN PROTECTED WATERS.

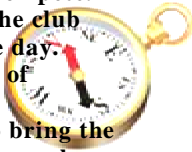
ANSWER THE QUESTIONS AND WIN PRIZES.

All boats welcome to compete.

Briefing sessions at the club rooms prior to race day.

Learn the basics of Nav. Rallying.

This is a family event so bring the kids, friends and anyone who enjoys time on the water.



**BBQ
LUNCH
\$20**

~ NON - BOAT OWNERS WELCOME ~



PHONE ANDREW BROADWAY
~ 0428 210 991
email rvmyc@optusnet.com.au



RVMYC
Opening Day

Saturday 2 October 2010

Join us this year to celebrate the official opening of the 2010/11 boating season.

Come & enjoy the festivities and Complimentary light refreshments.

Book your table now for the official luncheon and entertainment.

~FOR BOOKINGS~
email: rvmyc@optusnet.com.au
call: 9397 5036

260 NELSON PLACE, WILLIAMSTOWN, VICTORIA 3016

Phone: (03) 9397 5036 Fax: (03) 9397 6515

E-mail: rvmyc@optusnet.com.au

www.rvmyc.com.au

August 2010

MON	TUE	WED	THU	FRI	SAT	SUN
						1
2	3	4 MEMBERS DRAW 7.30pm	5	6 "Friday Night Mob" Raffle drawn 7.30pm	7	8 Quiz Rally 9.00am
9	10	11 MEMBERS DRAW 7.30pm	12	13 "Friday Night Mob" Raffle drawn 7.30pm	14	15
16	17	18 MEMBERS DRAW 7.30pm	19	20 "Friday Night Mob" Raffle drawn 7.30pm	21	22
23	24	25 MEMBERS DRAW 7.30pm	26	27 "Friday Night Mob" Raffle drawn 7.30pm	28	29
30	31					