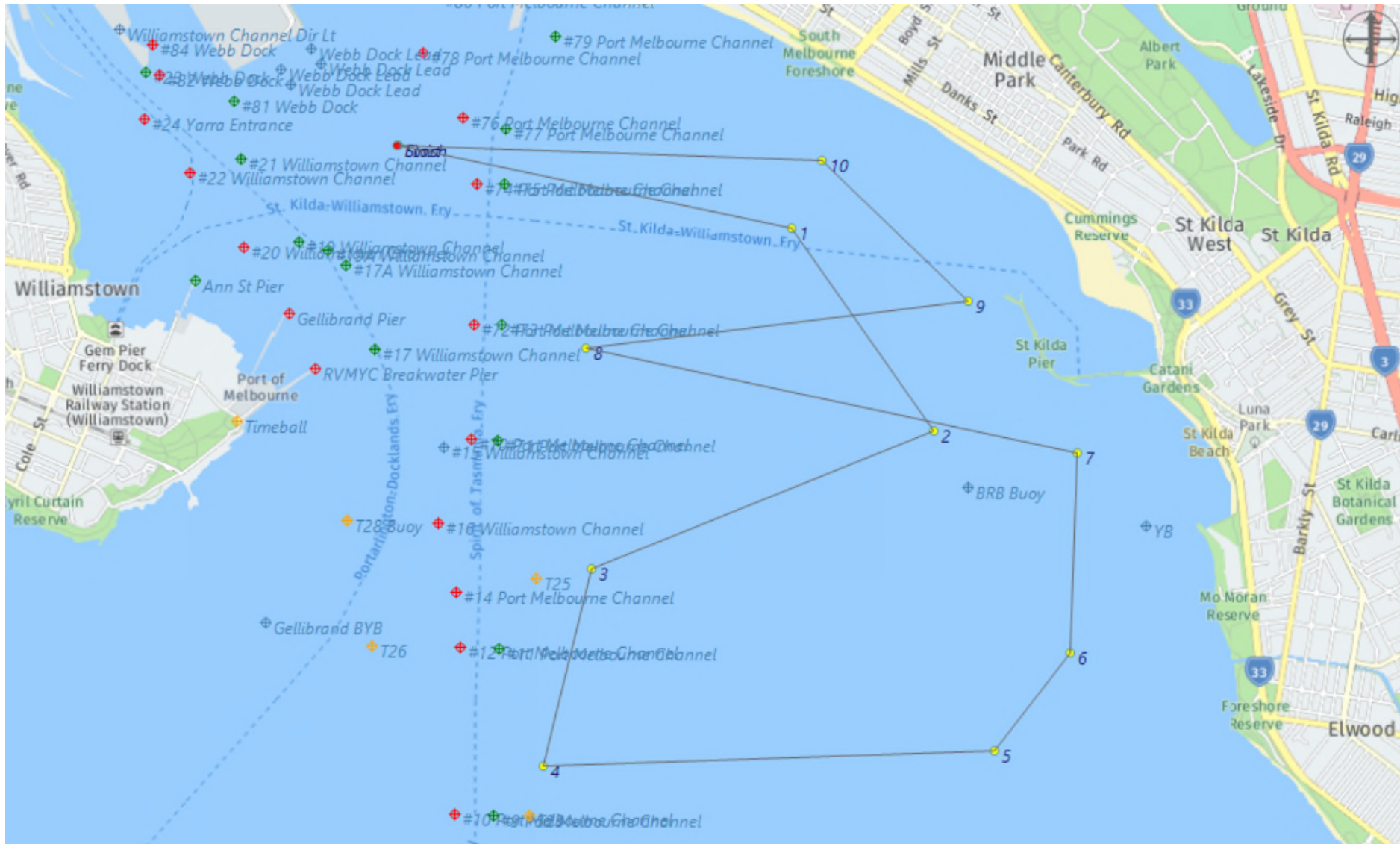




RVMYC CENTENARY **NAVRALLY** **BRIEFING INSTRUCTIONS**

Sunday 2nd May 2021

- CHART:** TACK TRACKER SOFTWARE MAP
- BEARINGS:** ALL BEARINGS GIVEN ARE TRUE
- DISTANCE:** ALL DISTANCES ARE IN NAUTICAL MILES
- START LINE:** AN IMAGINARY LINE EXTENDING VERY APPROXIMATELY FROM CHANNEL MARKER 80 THROUGH CHANNEL MARKER 78. THE START LINE EXTENDS .05Nm ALONG THIS LINE EITHER SIDE OF THE START DATUM.
- FINISH LINE:** APPROXIMATELY AS FOR START LINE
- DATUM:** A POSITION ON THE START LINE APPROXIMATELY 0.285NM FROM NO.78 CHANNEL MARKER. 37°51.187'S, 144°55.384'E (WGS 84)
- TIME:** GPS TIME.
- ID:** CLUB BURGEES MUST BE FLOWN.
- SAFETY:** CONTESTANTS MUST OBSERVE NAVIGATIONAL RULES ESPECIALLY IN RELATION TO GIVING WAY TO OTHER VESSELS. SPECIAL CARE MUST BE TAKEN AT TURNING POINTS AND WHEN CROSSING CHANNELS.
- WEATHER:** IN THE EVENT OF INCLEMENT WEATHER, PHONE SIMON MILLS **0413 312 040** AFTER 0800 HOURS ON THE DAY OF THE EVENT.
- NOTES:**
1. The trial will be conducted using the TACK TRACKER system and in line with the Navrally Rules as adopted by RVMYC November 2013. Copies of the Rules are available from the RVMYC website.
 2. Checks will consist of a series of imaginary gates positioned along the course. The gate boundaries will be .05Nm either side of the course centre line. The penalty for missing the start gate (if used) will be 100 points. Missing other gates will incur a 50 point penalty. The total penalty incurred for missing gates will be 300 points.
 3. It is the responsibility of each skipper to make sure their Tack Tracker is switched on and logging prior to starting the event. Tack Tracker usage instructions are available from the Race Committee on request.
 4. Vessels must be on course and speed 1 cable before the start line. All vessels must keep at least 1 cable clear of the start line unless actually starting.
 5. Official event start time will be 0925 hours. Individual start times will be emailed to the address supplied on the entry form.
 6. It is the responsibility of each skipper to monitor weather conditions and withdraw from the event if at any time they consider their vessel or crew at risk.
- For further information please call:
CLUB: 9393 2888 OR Simon Mills: 0413 312 040.
- RADIO WATCH:** A WATCH WILL BE KEPT ON CHANNEL 16 VHF
- EVENT COMMITTEE:** Simon Mills, Mark Rindfleish





Event: Centenary Trophy
Race Number: 1

Rally Course for: Centenary Trophy

2 May 2021

Course	Rules	Leg Distance (Nm)	Leg Bearing	Cum. Distance (Nm)	Latitude	Longitude
Start		0		0	37 51.187 S	144 55.384 E
Turn 1		1.200	102.0	1.200	37 51.436 S	144 56.870 E
Turn 2		0.740	145.0	1.940	37 52.042 S	144 57.407 E
Turn 3		1.100	248.0	3.040	37 52.454 S	144 56.116 E
Turn 4		0.610	194.0	3.650	37 53.045 S	144 55.929 E
Turn 5		1.350	88.0	5.000	37 52.998 S	144 57.637 E
Turn 6		0.370	38.0	5.370	37 52.707 S	144 57.926 E
Turn 7		0.600	2.0	5.970	37 52.108 S	144 57.952 E
Turn 8		1.500	282.0	7.470	37 51.796 S	144 56.095 E
Turn 9		1.150	83.0	8.620	37 51.656 S	144 57.540 E
Turn 10		0.610	314.0	9.230	37 51.233 S	144 56.984 E
Finish		1.270	272.0	10.500	37 51.188 S	144 55.378 E